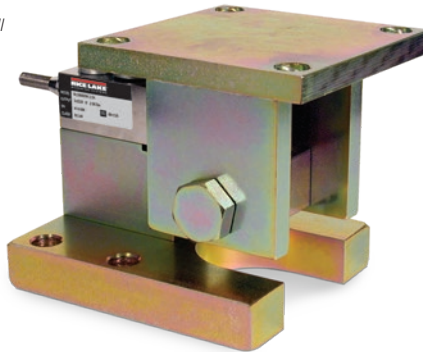


# RL1800 Series

Mild Steel/Stainless Steel Weigh Modules



Module with RL32018 single-ended beam load cell



Picture is a representation of actual product.

## Load Cell Approvals



Except 250lb and 500lb

## Complete Kit Includes

- One JB4SS NEMA Type 4X stainless steel signal trim junction box
- Three or four RL1800 mild steel or stainless steel compression mounts
- Three or four RL32018 single-ended beam load cells, RL32018S used in stainless steel
- 25 ft of hostile environment EL147HE SURVIVOR® load cell cable

## Standard Features

- Capacities (per module): 250 to 10,000 lb
- NTEP Certified cells in 1,000 to 10,000 lb capacities, except 3,000 lb
- Zinc plated mild steel/stainless steel construction
- Center-pivoted, tension loading design
- Self-checking, multi-directional movement
- Load is suspended on high-strength bolt instead of wire rope
- Design incorporates spherical washers for self centering
- Stainless steel kit includes RL32018S NTEP Certified load cell

## Applications

- Conveyors
- Medium-capacity tanks and hoppers
- Mixers and blenders
- Process measurement and control

WEIGH MODULES

## Mild Steel Order Information

Load Rating (Per Module)	Part #	Price
<b>Single Module (Does NOT Include Load Cell)</b>		
250 lb to 5,000 lb SE	<b>17817</b>	Consult
5,000 lb LE to 10,000 lb	<b>17819</b>	Consult
<b>3-Module Kit</b>		
250 lb*	<b>18075</b>	Consult
500 lb*	<b>18076</b>	Consult
1,000 lb	<b>18077</b>	Consult
2,000 lb	<b>18078</b>	Consult
2,500 lb	<b>18079</b>	Consult
3,000 lb	<b>18080</b>	Consult
4,000 lb	<b>18081</b>	Consult
5,000 lb SE	<b>18082</b>	Consult
5,000 lb LE	<b>18083</b>	Consult
10,000 lb	<b>18084</b>	Consult
<b>4-Module Kit</b>		
250 lb*	<b>18085</b>	Consult
500 lb*	<b>18086</b>	Consult
1,000 lb	<b>18087</b>	Consult
2,000 lb	<b>18088</b>	Consult
2,500 lb	<b>18089</b>	Consult
3,000 lb	<b>18090</b>	Consult
4,000 lb	<b>18091</b>	Consult
5,000 lb SE	<b>18092</b>	Consult
5,000 lb LE	<b>18093</b>	Consult
10,000 lb	<b>18094</b>	Consult

SE=Small envelope; LE=Large envelope

\* Non-NTEP Certified using RL30000 or RL32018 load cells.

## Stainless Steel Order Information

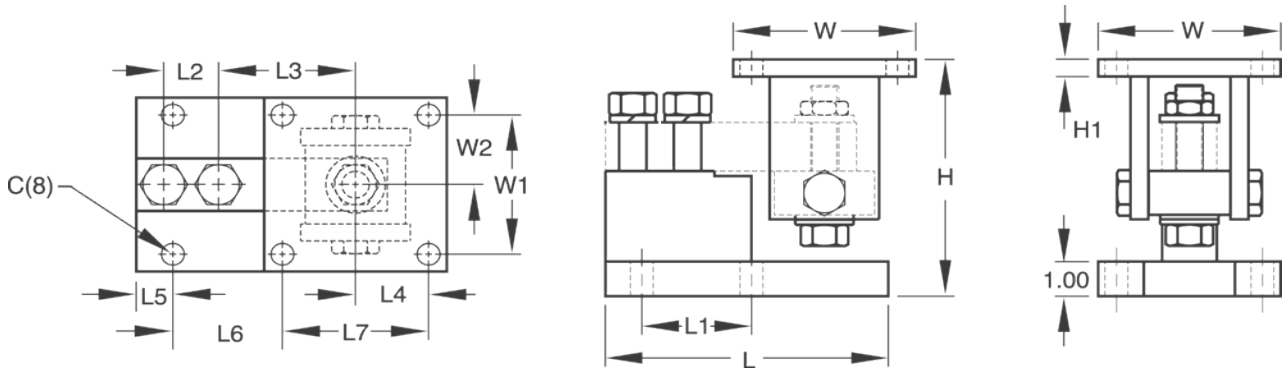
Load Rating (Per Module)	Part #	Price
<b>Single Module (Does NOT Include Load Cell)</b>		
250 lb to 4,000 lb	<b>17818</b>	Consult
5,000 lb to 10,000 lb	<b>17820</b>	Consult
<b>3-Module Kit</b>		
1,000 lb	<b>18095</b>	Consult
2,000 lb	<b>18096</b>	Consult
2,500 lb	<b>18097</b>	Consult
4,000 lb	<b>18099</b>	Consult
5,000 lb LE	<b>18100</b>	Consult
10,000 lb	<b>18101</b>	Consult
<b>4-Module Kit</b>		
1,000 lb	<b>18102</b>	Consult
2,000 lb	<b>18103</b>	Consult
2,500 lb	<b>18104</b>	Consult
4,000 lb	<b>18106</b>	Consult
5,000 lb LE	<b>18107</b>	Consult
10,000 lb	<b>18108</b>	Consult
<b>Dummy Cell</b>		
Dummy load cell 1 k to 5 k SE	<b>22980</b>	Consult

# RL1800 Series

Mild Steel/Stainless Steel Weigh Modules

## Dimensions

Rated Capacity	C	H Min/Max	H1	L	L1	L2	L3	L4	L5	L6	L7	W	W1	W2
<b>Mild Steel Construction</b>														
lb/in														
250 to 5,000SE	0.62	5.25/5.56	0.50	6.00	2.00	1.00	3.00	2.00	0.68	1.94	4.00	5.00	4.00	2.00
5,000LE to 10,000	0.62	6.12/6.62	0.50	7.75	3.00	1.50	3.75	2.00	1.03	2.97	4.00	5.00	4.00	2.00
<b>Stainless Steel Construction</b>														
lb/in														
1,000 to 4,000	0.62	5.25/5.56	0.50	6.00	2.00	1.00	3.00	2.00	0.68	1.94	4.00	5.00	4.00	2.00
5,000 to 10,000	0.62	6.12/6.62	0.50	7.75	3.00	1.50	3.75	2.00	1.03	2.97	4.00	5.00	4.00	2.00



WEIGH MODULES